

POR PUGLIA FSR 2014-2020
ASSE IV, AZIONE 4.1 e ASSE IX, AZIONE 9.13

Comune di Lucera
Intervento di vecchio stitica, efficientamento energetico e eliminazione delle
botiere architettoniche del lotto A.R.C.A. Capitanata n. 450,
sito in Via Itzono
Finanziamento: € 5.500.000

Il progettista
Arch. Roberto Galati
Via S. Maria della Pace, 119
71121 Foggia - telefono 0884/420000 fax 0884/420001
e-mail: roberto.galati@arcanet.it

Il responsabile tecnico del procedimento e
il responsabile del cantiere
(Ing. Ufficio Contratti ARCA Capitanata)
Ing. Francesco Sabatì

Il dirigente dell'Area Urbanistica
Ing. Vincenzo De Dominicis

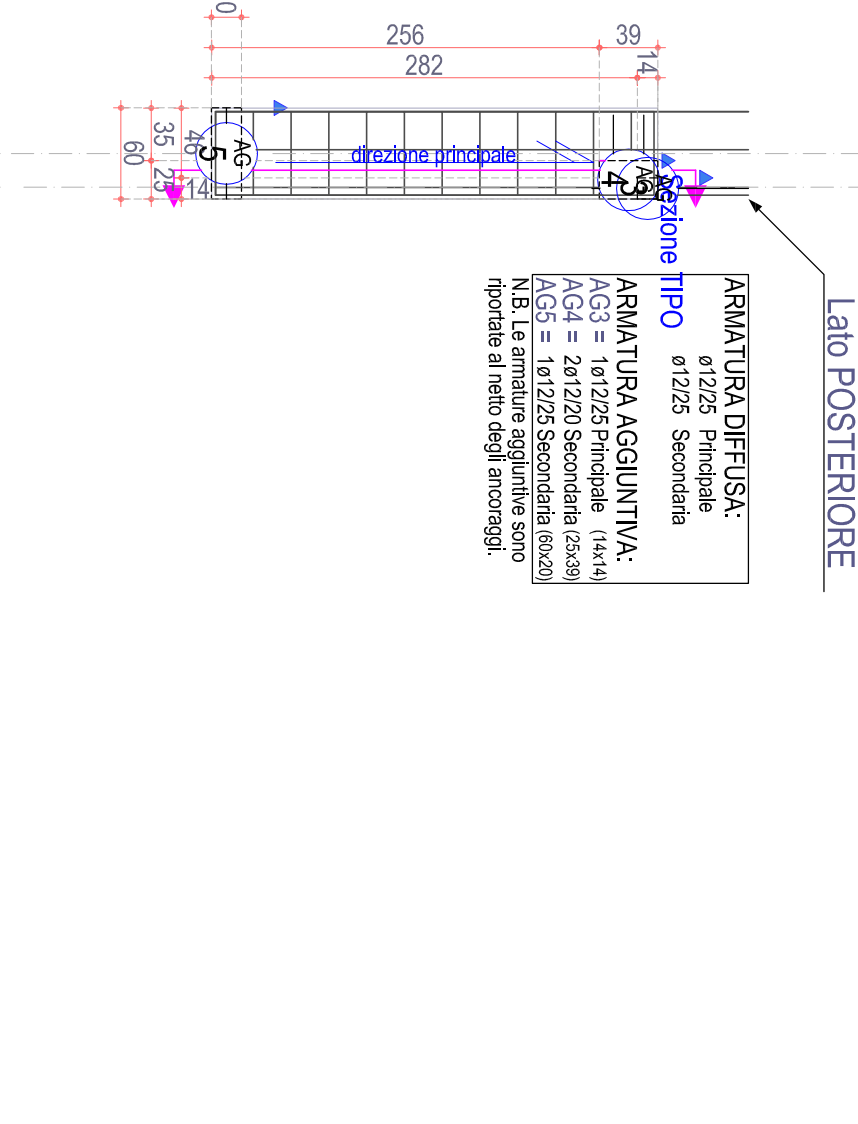
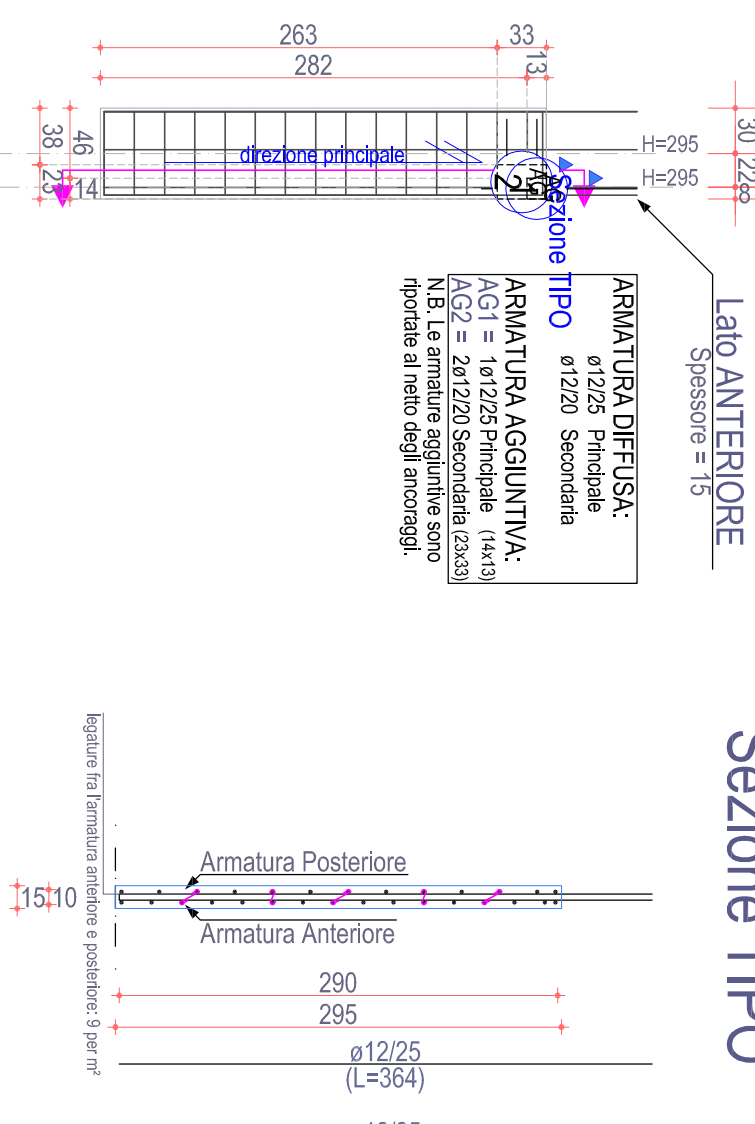
PIANTA	ESECUTIVI STRUTTURE BLOCCO "B" STATO DI PROGETTO	SCALA 1:500
ES19	PARETI PIANO SECONDO	UNA
ACCOMPAGNAMENTI	L. IMPIEGATA	L. IMPIEGATA DEL VANTO
86		

PARETE 22-P22

Piano Secondo

22 P22

Sezione TIPO

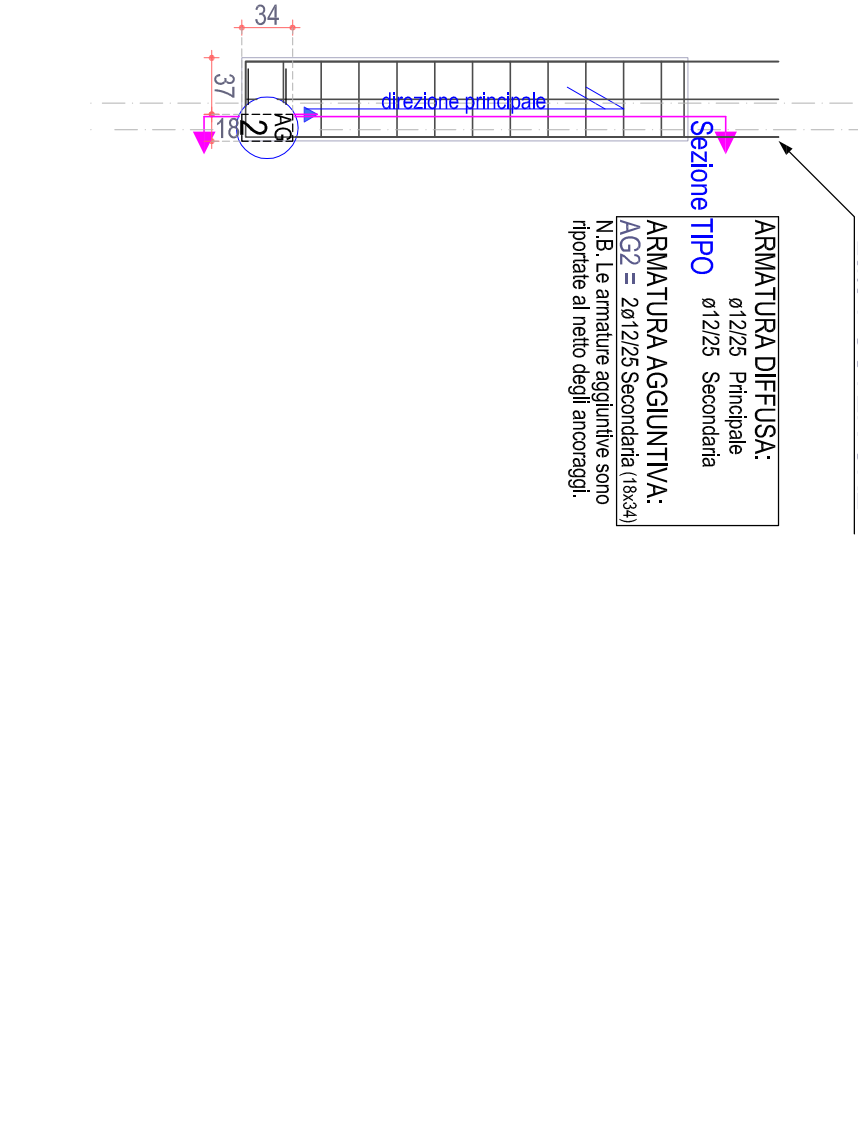
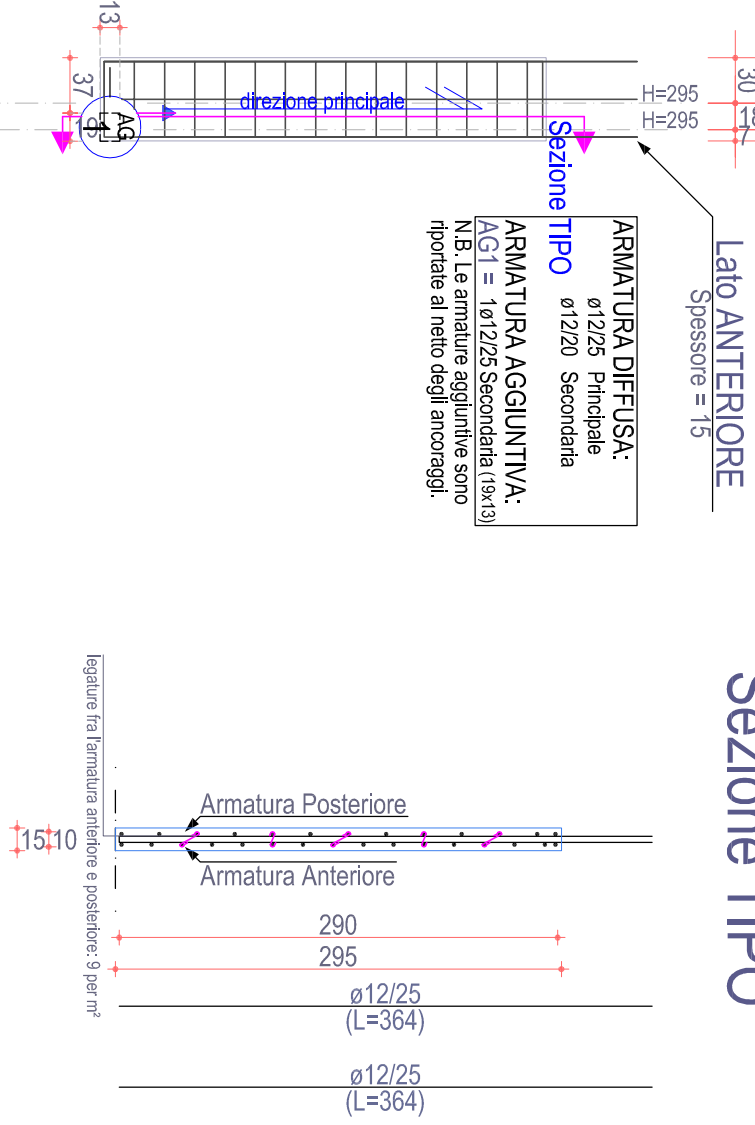


PARETE 23-P25

Piano Secondo

23 P25

Sezione TIPO

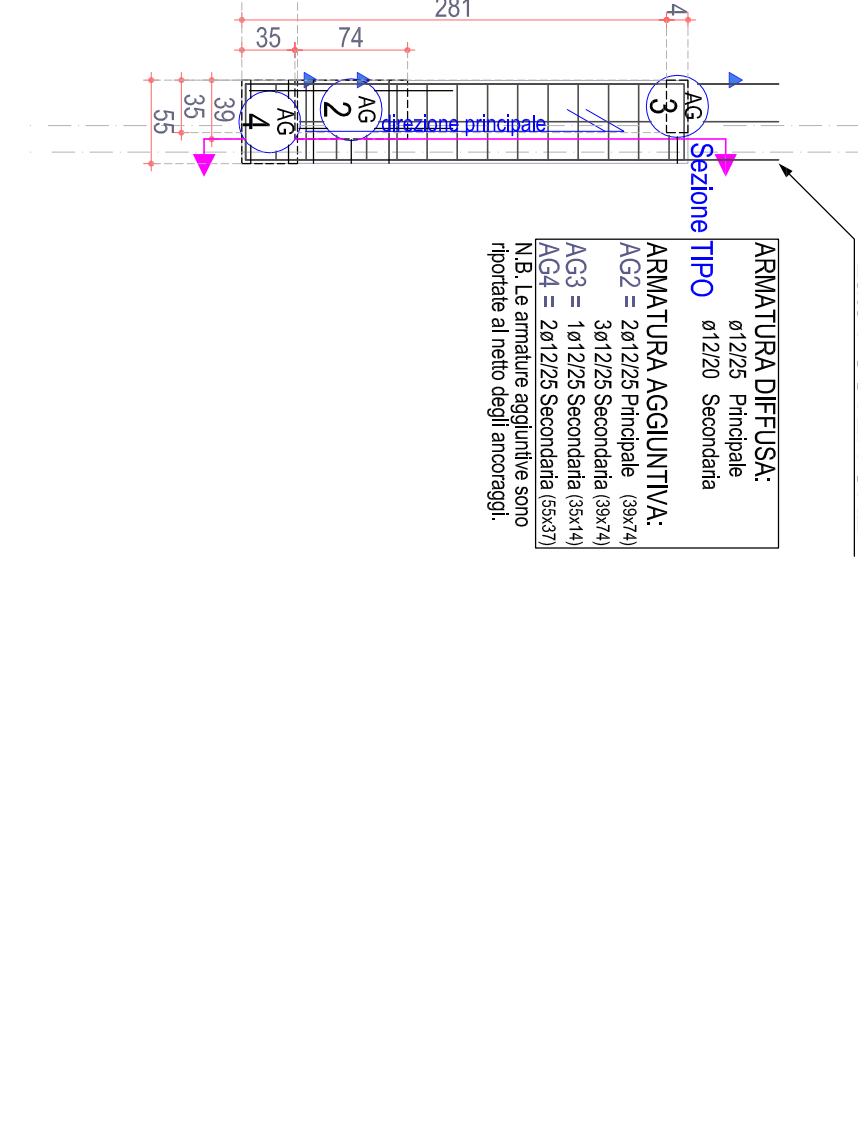
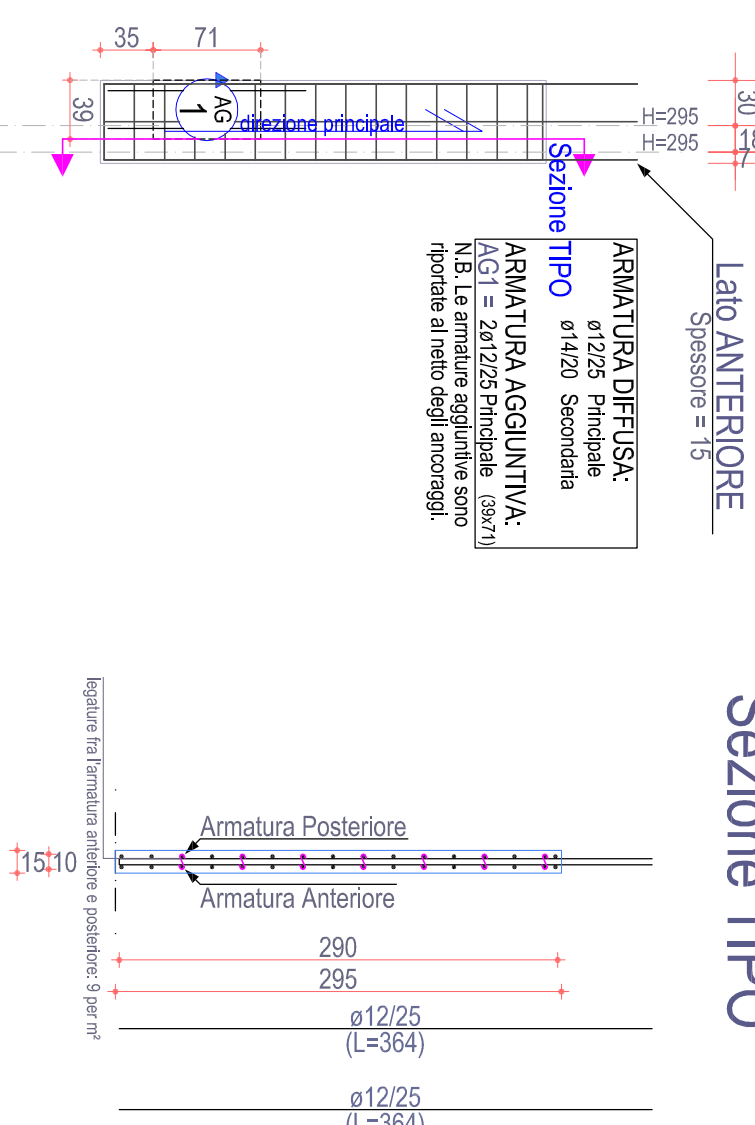


PARETE 24-P26

Piano Secondo

24 P26

Sezione TIPO

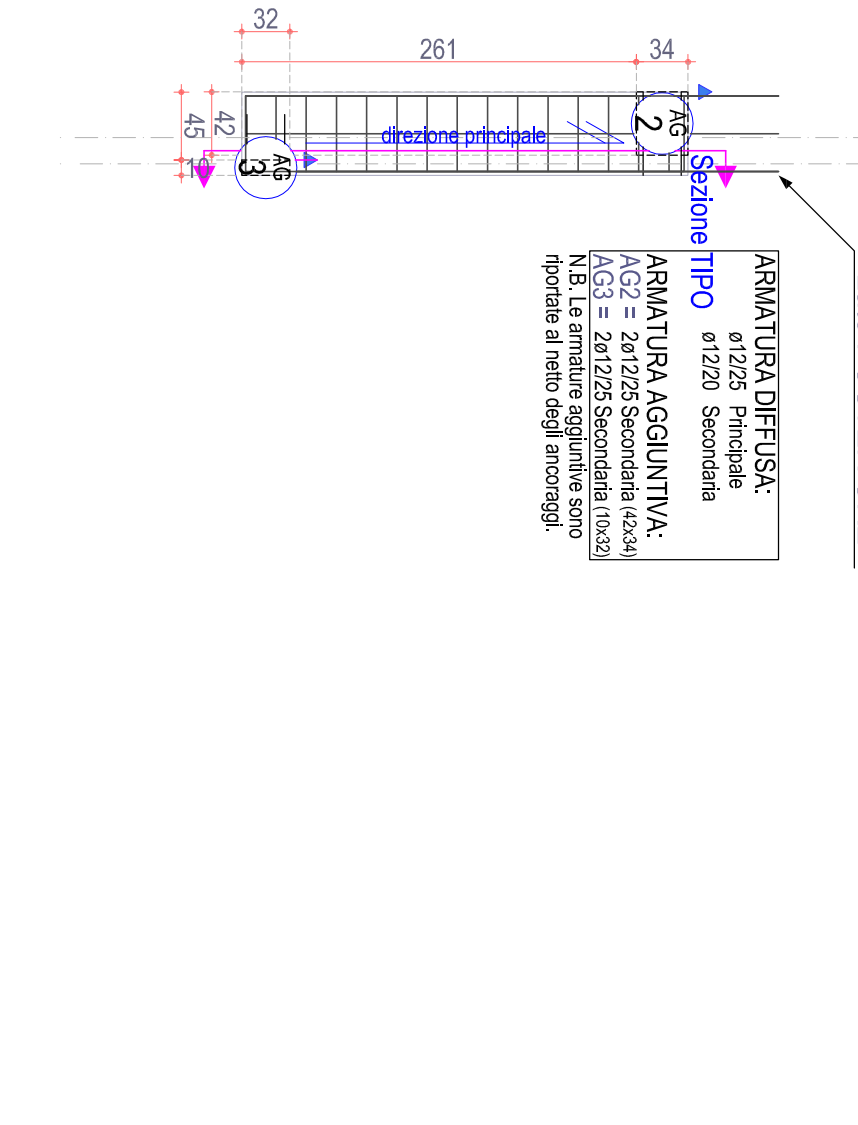
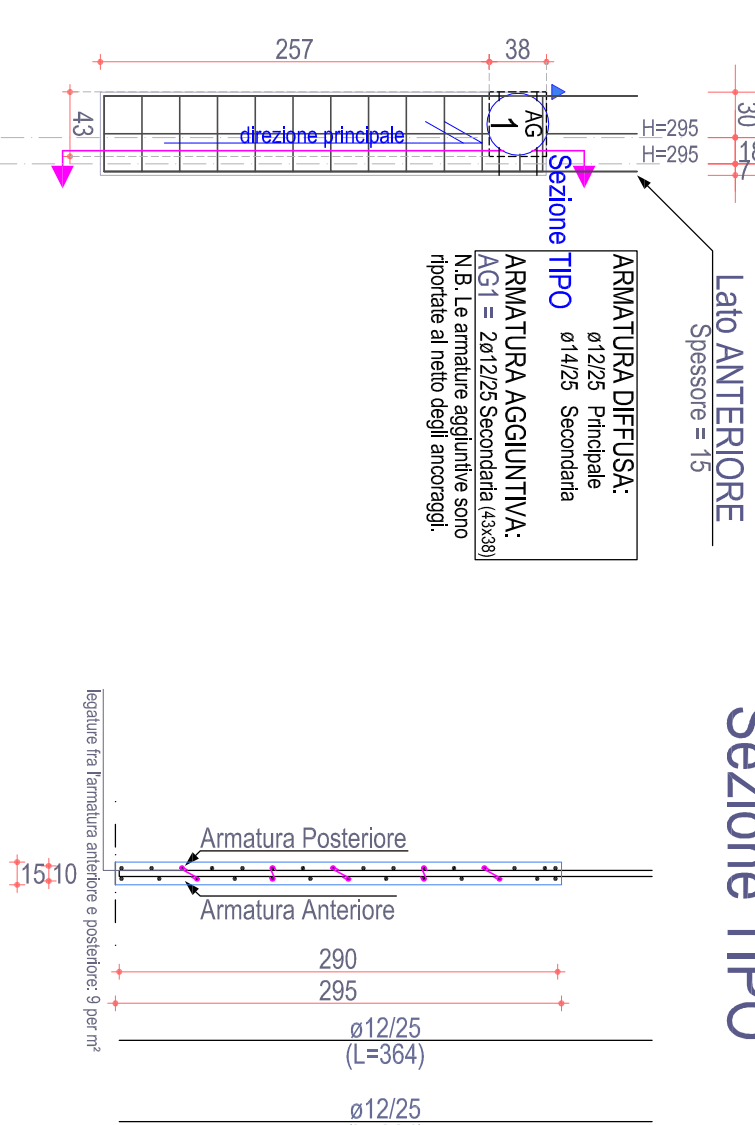


PARETE 25-P29

Piano Secondo

25 P29

Sezione TIPO

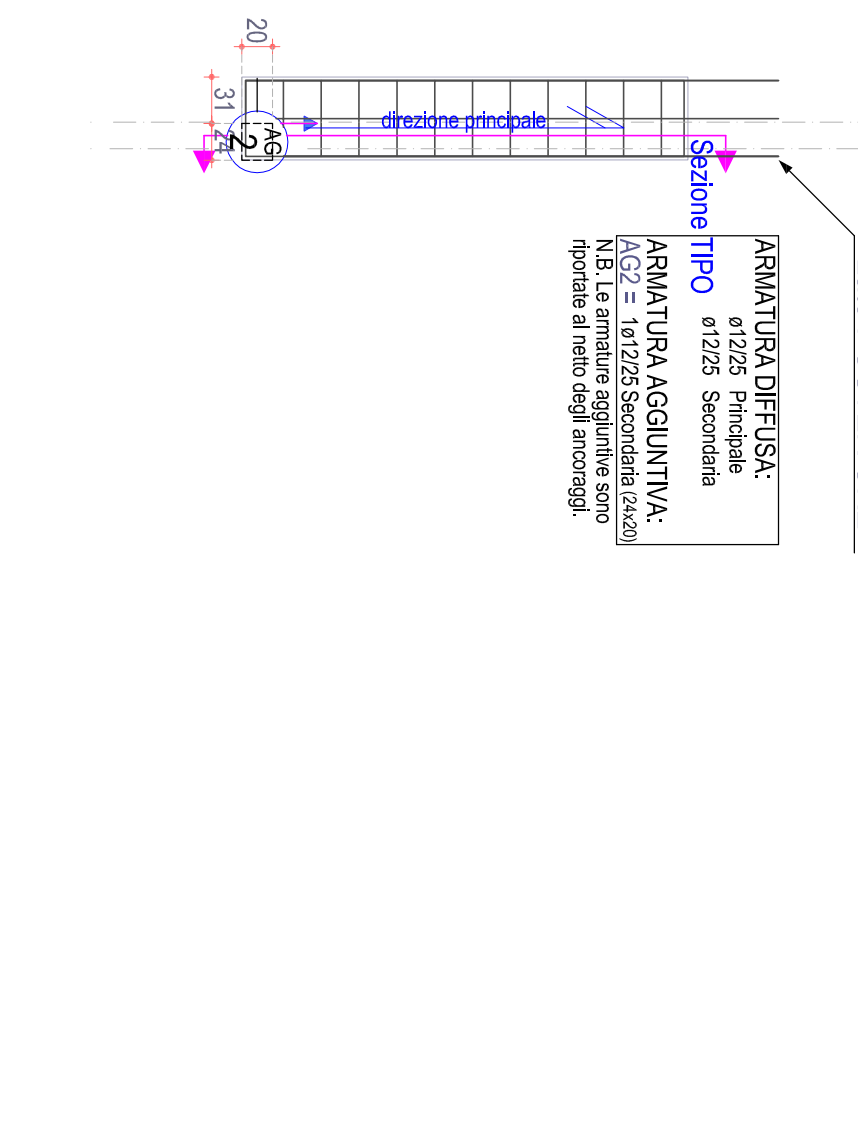
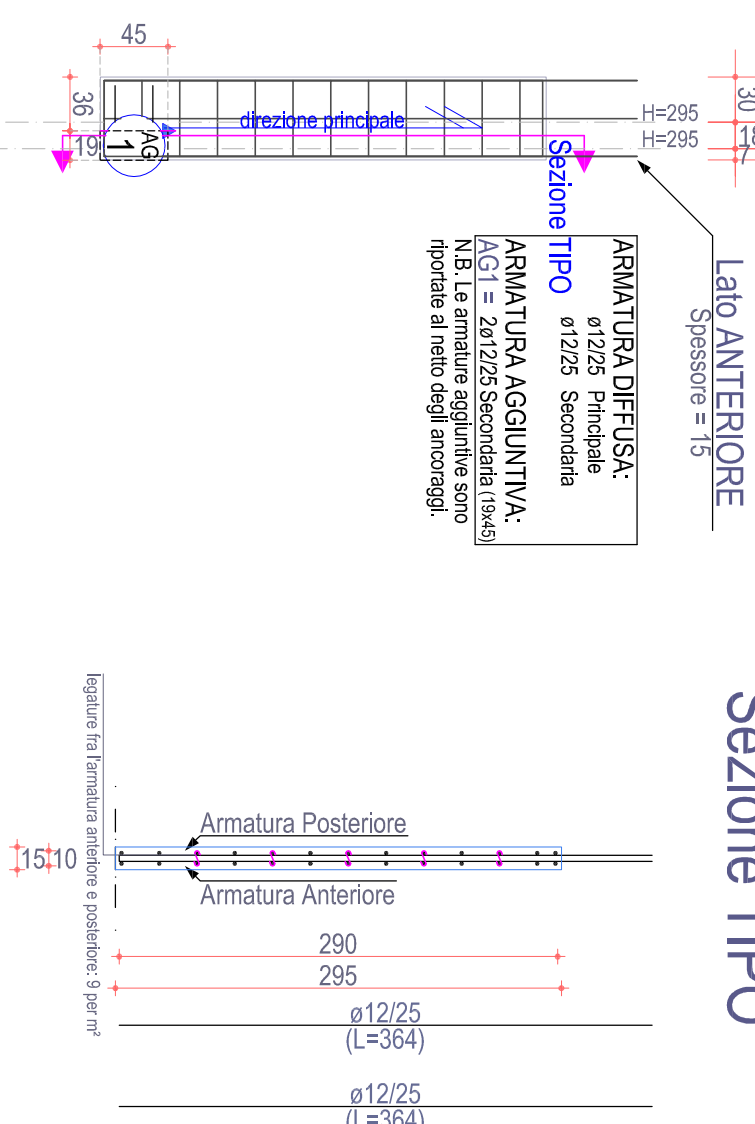


PARETE 26-P30

Piano Secondo

26 P30

Sezione TIPO



PARETE P19-P20-P22

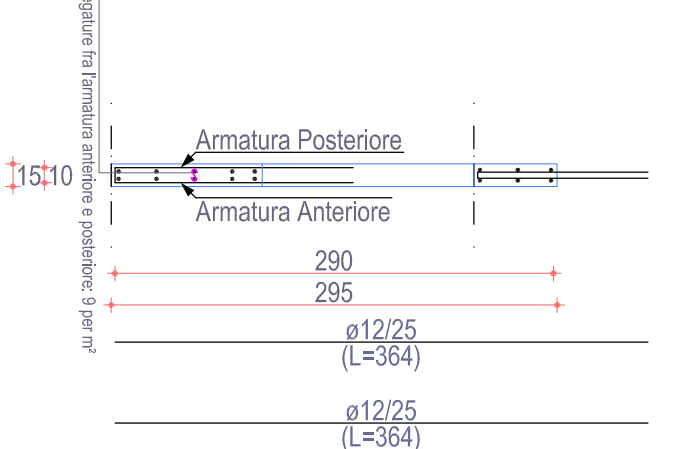
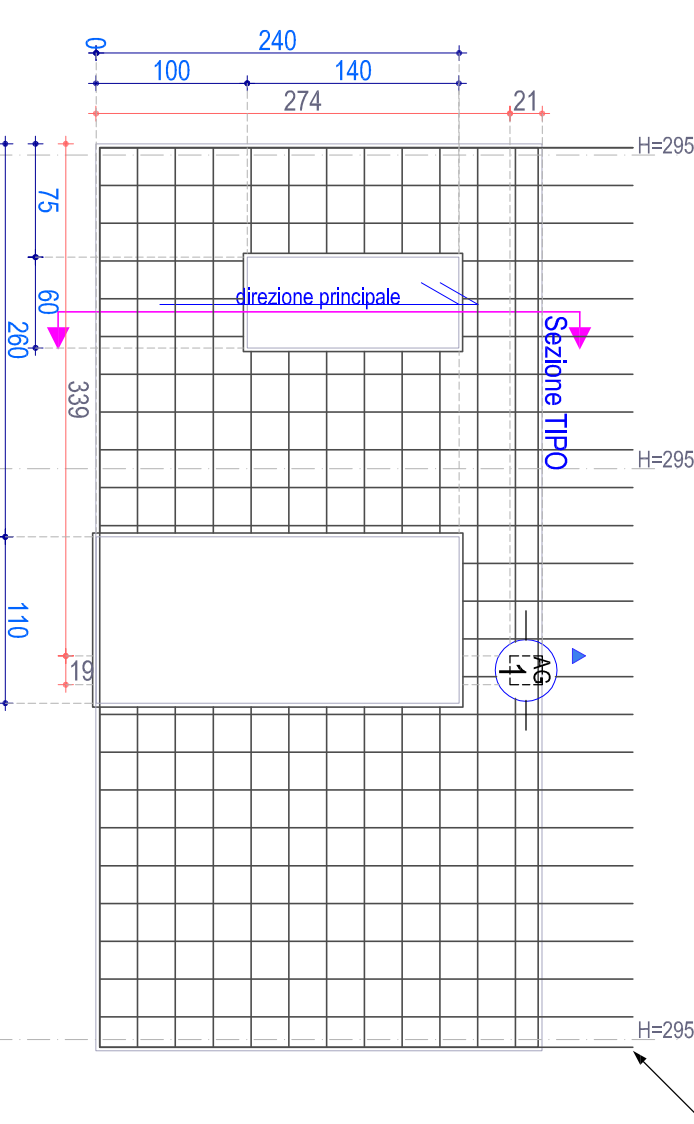
Piano Secondo

P19

P20

P22

Sezione TIPO



PARETE P24-P25-P26-P29-P30-P31

Piano Secondo

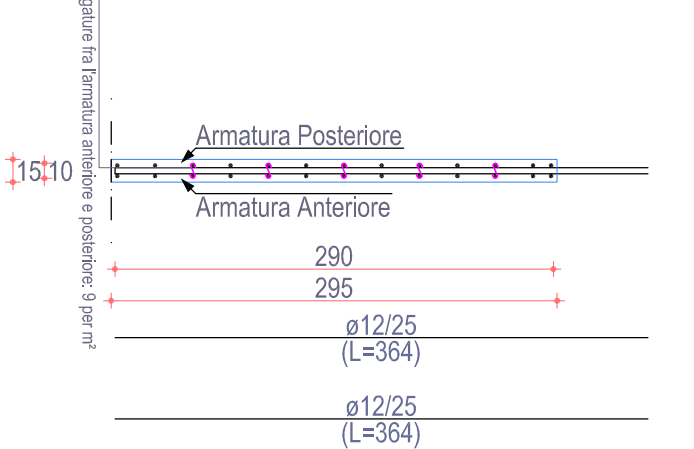
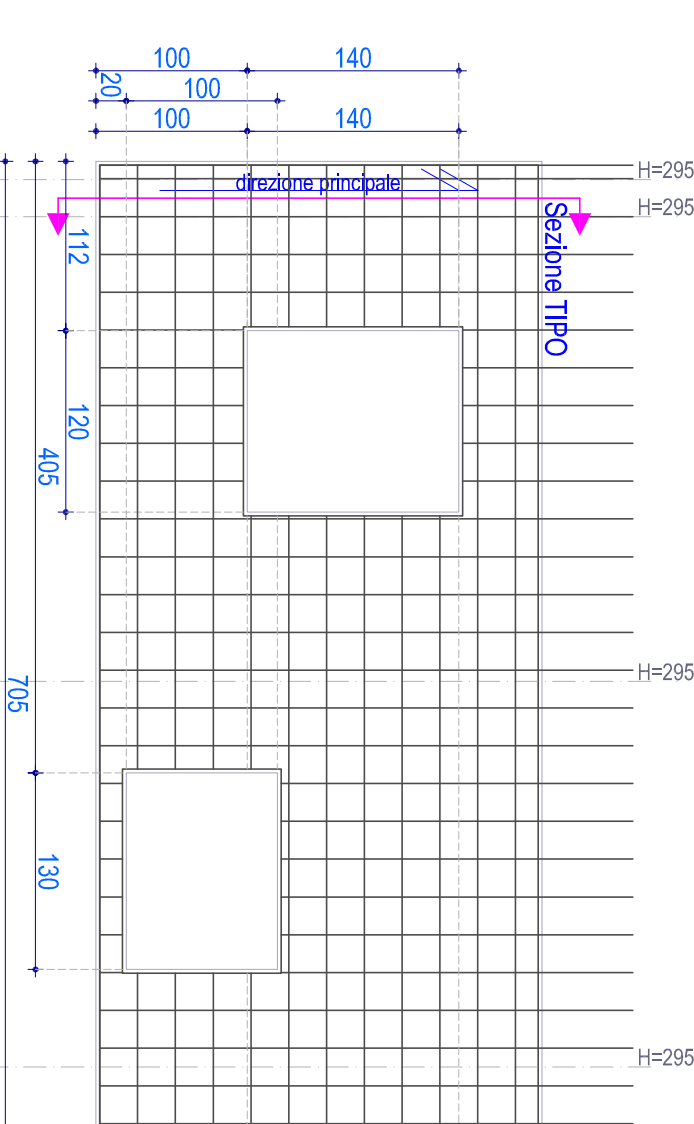
P24

P26

P29

P30

Sezione TIPO



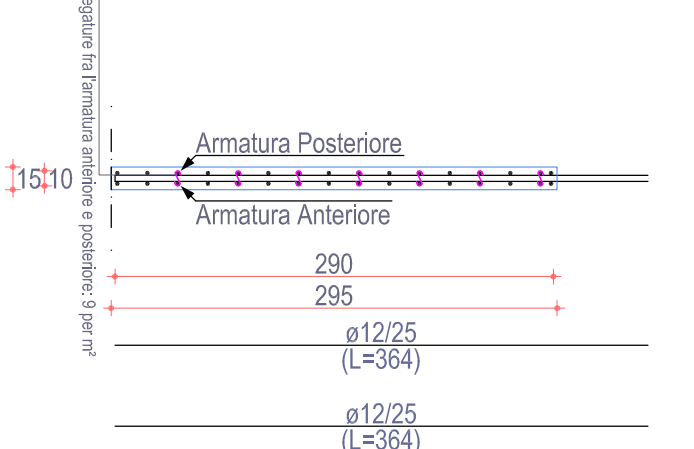
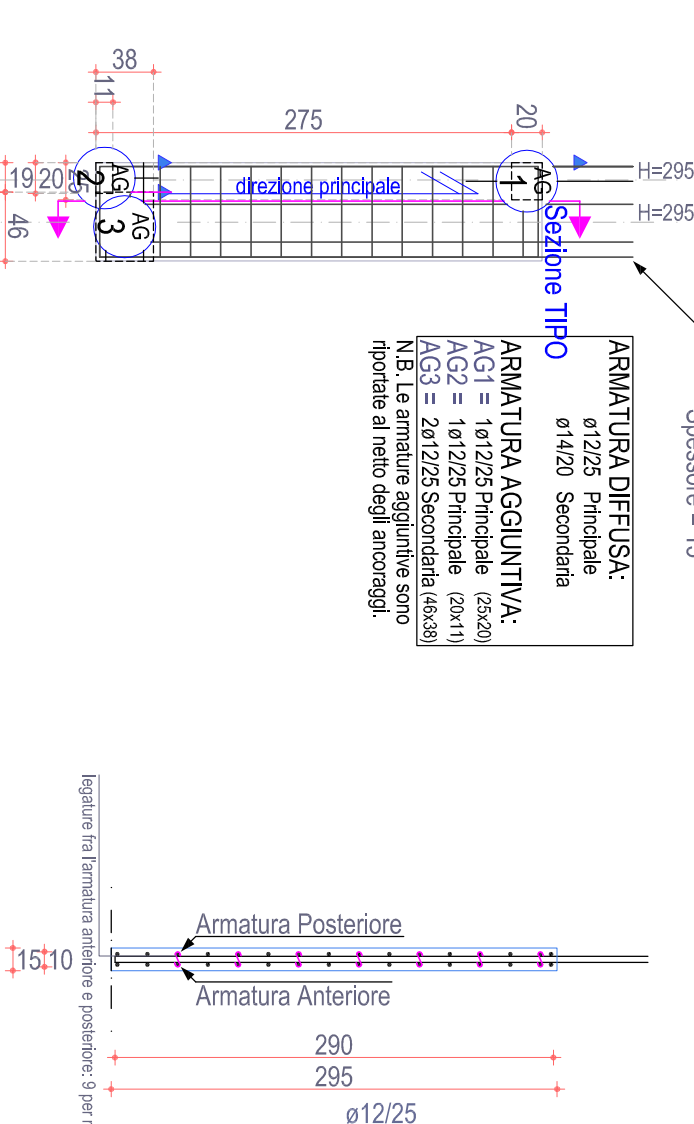
PARETE P6-1

Piano Secondo

P6

1

Sezione TIPO

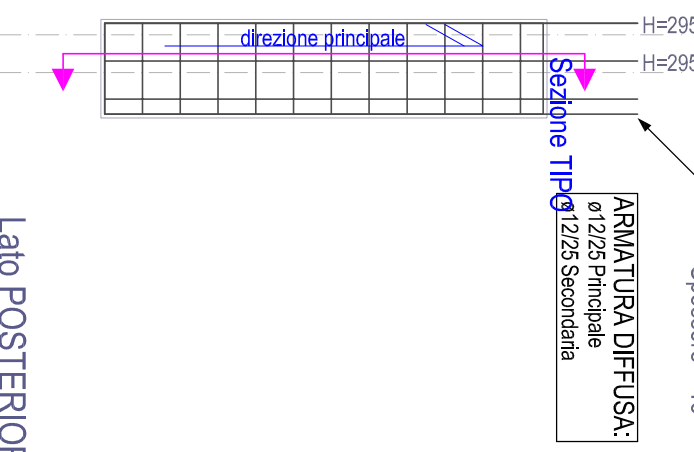
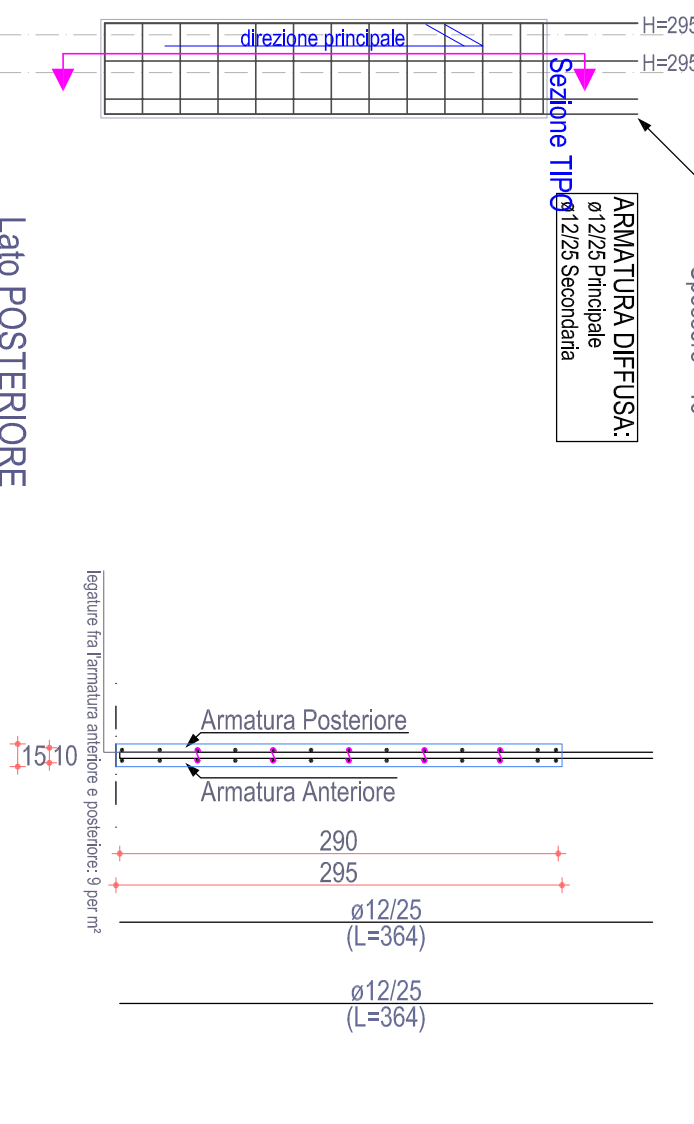


PARETE P7-2

Piano Secondo

P7

Sezione TIPO

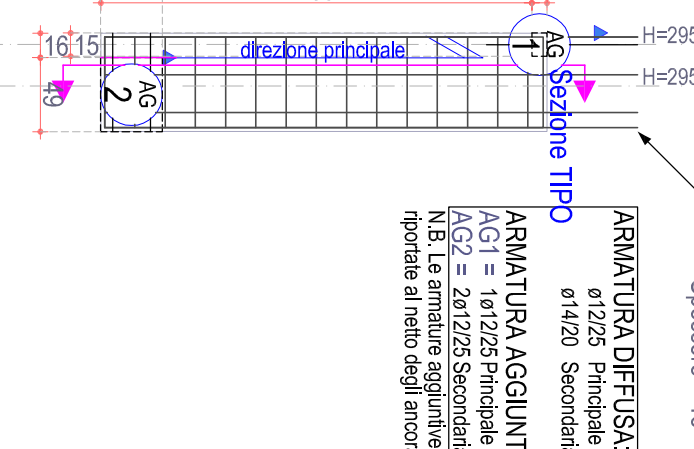
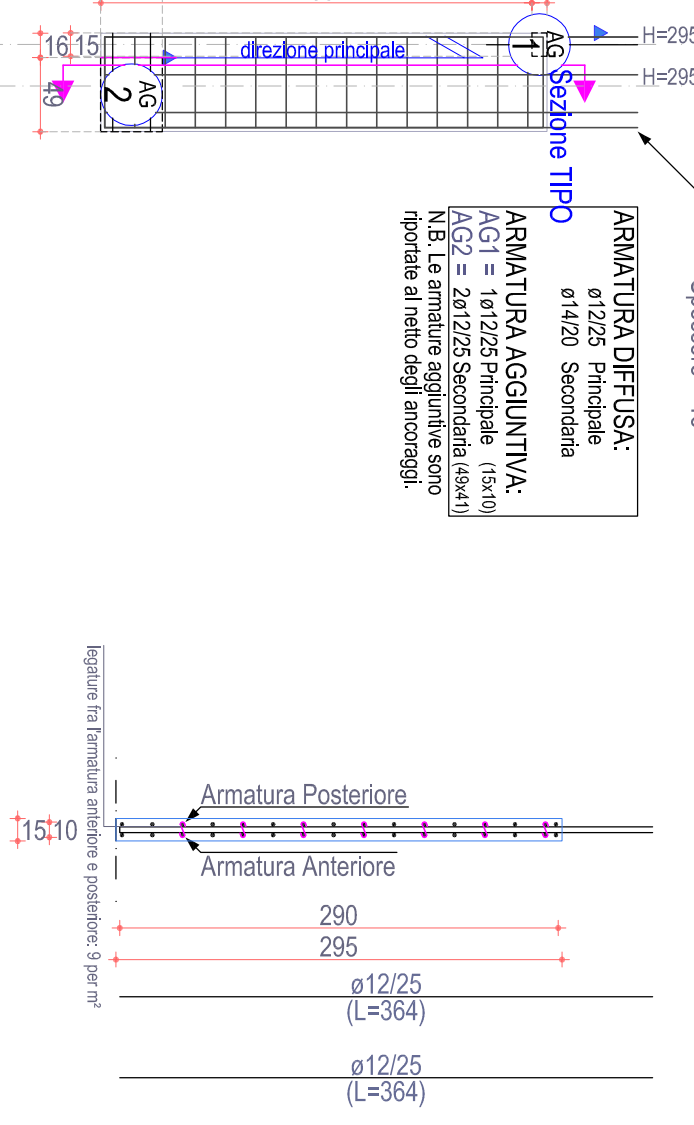


PARETE P9-3

Piano Secondo

P9

Sezione TIPO

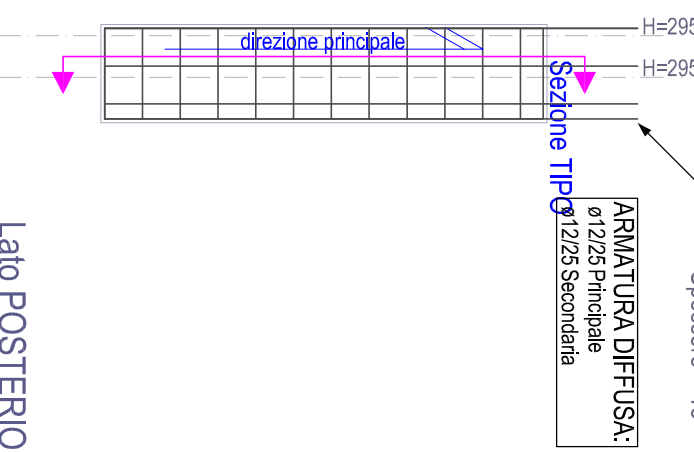
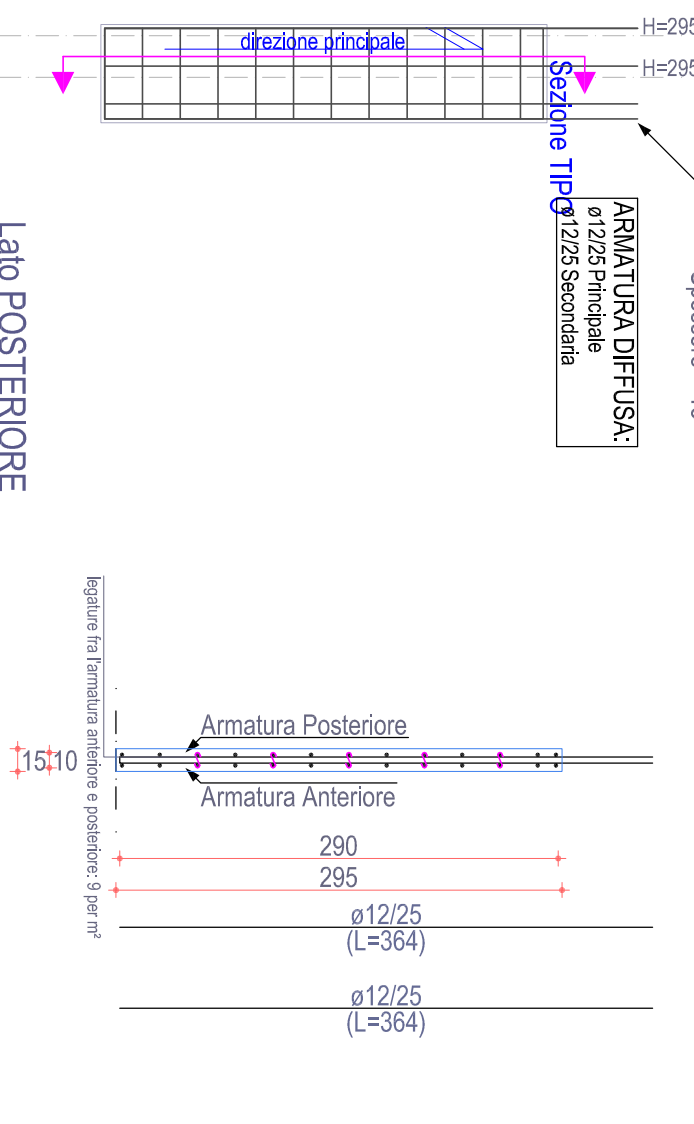


PARETE P10-4

Piano Secondo

P10

Sezione TIPO

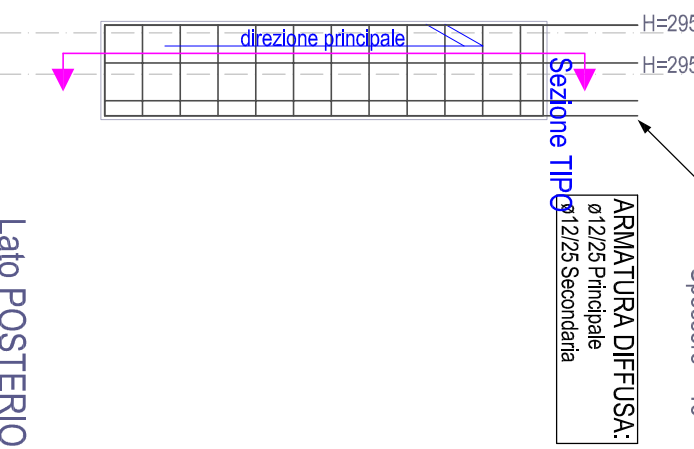
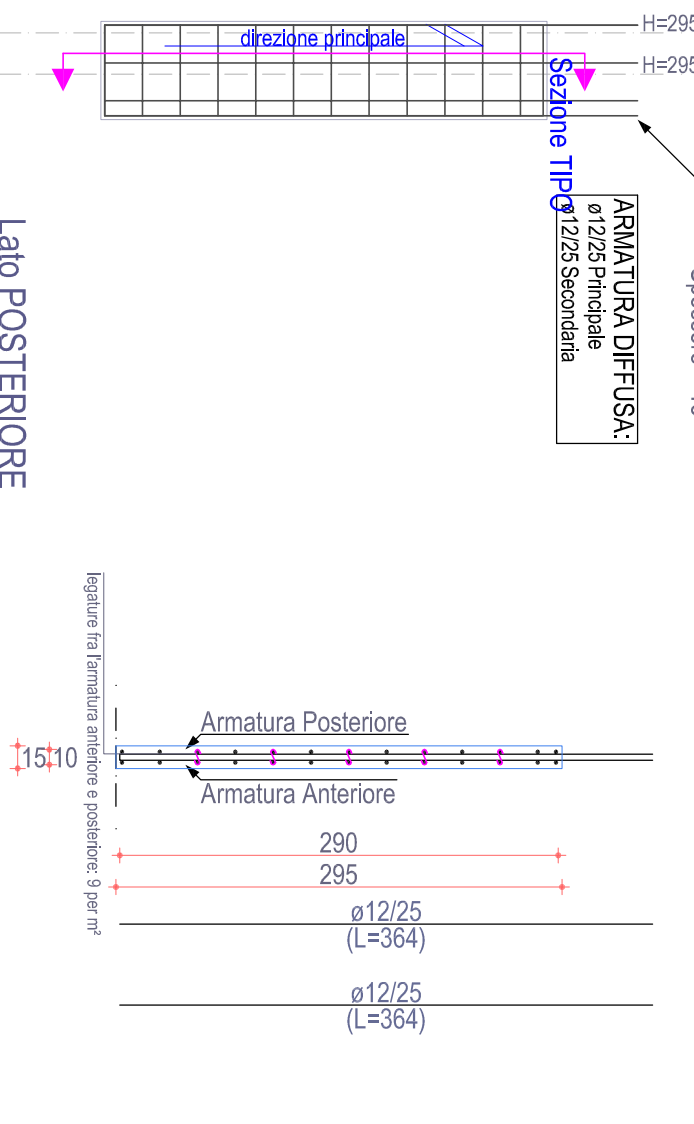


PARETE P11-5

Piano Secondo

P11

Sezione TIPO



PARETE P13-6

Piano Secondo

P13

Sezione TIPO

